

TRICKLE VALVE





General Points

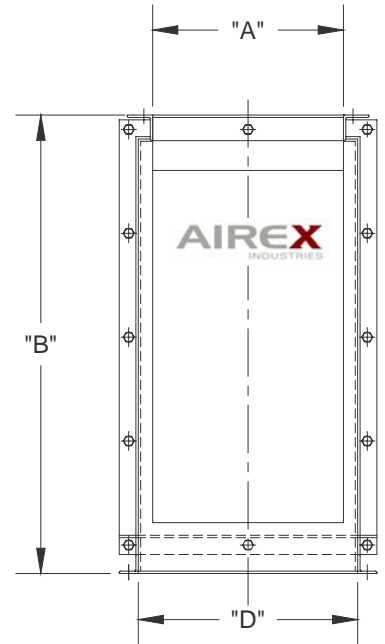
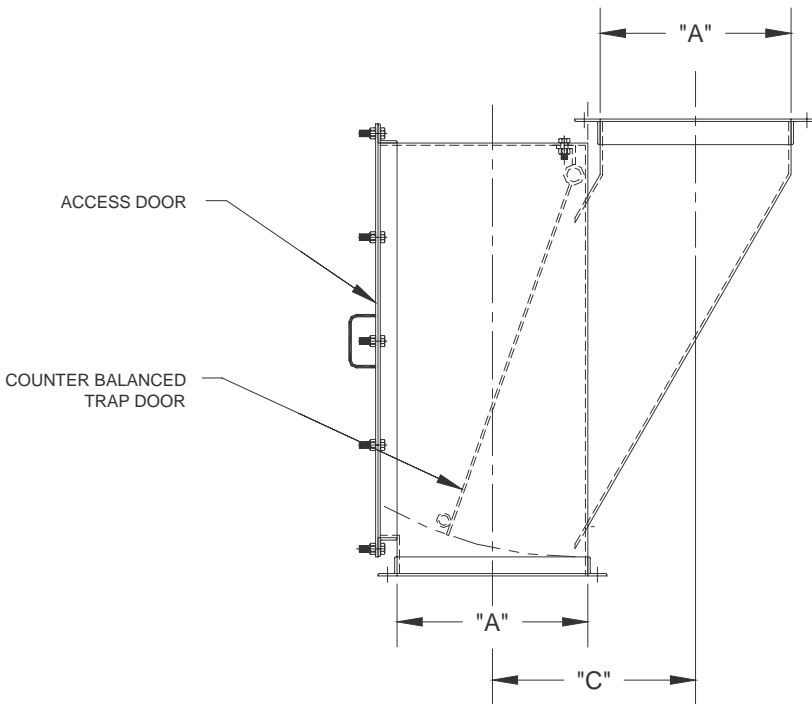
The Airex industries line of Trickle Valves provides a low cost, efficient, durable, means of controlling a dust collector's discharge. They are available in multiple sizes, use no moving parts, have no electrical connections, easy to inspect, and can withstand abrasive materials. The trickle valve uses a hinged door to maintain the seal between the collector and discharge. Once the accumulation of dust exceeds the vacuum pressure the door releases and allows material to flow via gravity. Standard size are 10" & 15". Custom sizes can be made. Mild steel industrial construction.





Technical Data Sheet – Trickle Valve

Model	A	B	C	D	Weight
TR-10 X 10	10"	27"	12"	12"	166
TR-15 X 15	15"	36"	16"	17 ¼"	292



In order to have our product meet the highest technological standards, we reserve the right to modify its specifications without notice.

HEAD OFFICE

8030, Metropolitan Blvd East
 Montreal (QC) H1K 1A1
 T : (514) 351-2303
 F : (514) 352-5891

ONTARIO DIVISION

6800, Kitimat Road, unit 32
 Mississauga (ON) L5N 5M1
 T : (905) 821-3674
 F : (905) 821-4857

PLANT

3025, Bernier Road
 Drummondville (QC) J2C 6Y4
 T : (819) 477-3030
 F : (819) 477-3437