

SCREW CONVEYOR





General Points



The Airex Industries line of screw conveyors are an efficient way of transporting bulk material horizontally or with small angles. A rotating screw pushes the material along within an enclosed trough from point A to point B. They come in three standard sizes, 6", 9", & 12". Typical construction is mild steel and motor horse powers range from 1 to 3 HP (multiple voltages available). The lengths of the screw conveyor vary with model and diameter, but typically range between 5' to 24' standard. Custom sizes available.



Technical Data Sheet – Screw Conveyor

BODY

DIA.	SHAFT	LENGTH
6"	DIA. 1 ½	5'-0" @ 9'-11"
		10'-0" @ 19'-10"
9"	DIA 2	5'-0" @ 9'-11"
		10'-0" @ 19'-10"
12"	DIA 2 7/16	5'-0" @ 11'-10"
		12'-0" @ 23'-8"

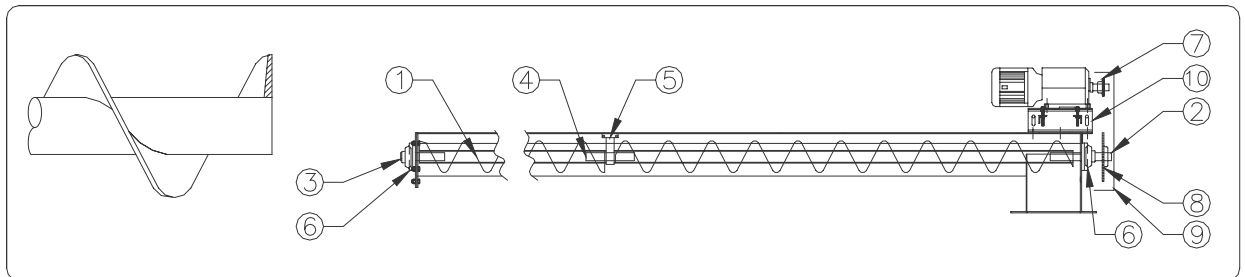
DRIVE SYSTEM

H.P.	VOLTAGE
1	230/460/575/3/60
1.5	230/460/575/3/60
3	230/460/575/3/60

ACCESSORIES

DESCRIPTION

- 1- SCREW ONLY DIA. X LENGTH
- 2- DRIVE SYSTEM SHAFT
- 3- SHAFT END
- 4- SHAFT COUPLER
- 5- SCREW SUPPORT
- 6- FLANGE BEARING (1)
- 7- MOTOR GEAR
- 8- SCREW GEAR
- 9- BELT GUARD
- 10- MOTOR BASE



In order to have our product meet the highest technological standards, we reserve the right to modify its specifications without notice.

HEAD OFFICE

8030, Metropolitan Blvd East
 Montreal (QC) H1K 1A1
 T : (514) 351-2303
 F : (514) 352-5891

ONTARIO DIVISION

6800, Kitimat Road, unit 32
 Mississauga (ON) L5N 5M1
 T : (905) 821-3674
 F : (905) 821-4857

PLANT

3025, Bernier Road
 Drummondville (QC) J2C 6Y4
 T : (819) 477-3030
 F : (819) 477-3437