

BLOWER MODEL SXB





General points

The Airex industrial model blower « SXB » ranges in size from 12¼ to 44 1/2 and includes a square housing and a backward inclined wheel. Various volumes, pressures and class available. Mild steel construction. Capable of up to 50,000 cfm, 15" H2O, & 650 degree F.

Features

- AMCA C construction.
- Solid backward inclined blades handle dusty and mildly corrosive airstreams.
- Square housing offers a choice of four discharge positions, & versatile motor base mounting.
- Four-way gusset maintains structural stability regardless of motor location
- Hyperbolic wheel cone optimizes smooth stable air flow.

Accessories

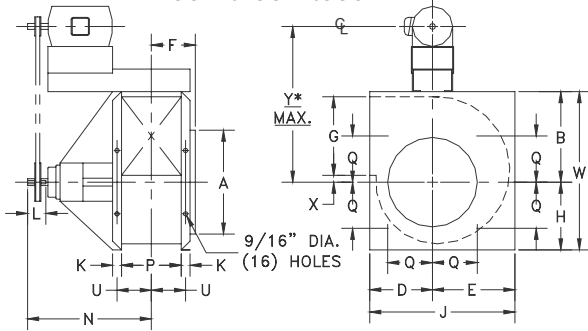
- AMCA B Construction;
- Inlet Screen;
- Shaft Guard;
- Drain;
- Punched Flanged Inlet;
- Shaft Cooler and Guard;
- Bolt-on Inlet Box;
- Punched Flanged Outlet;
- Shaft Seal;
- Outlet Damper;
- Unitary Base;
- Extended Grease Fittings;
- Split Housing;
- Belt Guard;
- Access Door.



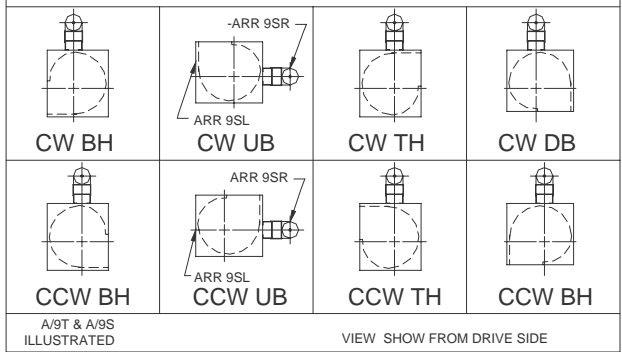


Technical data sheet – Blower / SXB SERIES

ARRANGEMENT



POSITION OF DISCHARGE & ROTATION



Model SXB	Ø shaft		Keyway size		A	B	D	E	F	G	H	J	K
	CL-IIIS	CL-III	CL-IIIS	CL-III									
12-1/4	1-3/16	NA	¼ X 1/8	NA	16-1/2	14-1/16	10	12-1/2	7	12	10-1/2	22-1/2	1-1/8
13-1/2	1-3/16	NA	¼ X 1/8	NA	18	15-3/8	11	13-3/4	7-9/16	13-1/4	11-1/2	24-3/4	1-1/8
15	1-3/16	NA	¼ X 1/8	NA	19-5/8	17-5/16	13	14-1/4	8-9/16	14-9/169	12-3/4	27-1/4	1-1/2
16-1/2	1-7/16	NA	3/8 X 3/16	NA	21-5/8	18-15/16	13	16-3/4	8-7/8	16-3/16	14	29-3/4	1-1/2
18-1/4	1-11/16	NA	3/8 X 3/16	NA	23-3/4	20-13/16	14-1/4	18-1/2	10-1/8	17-13/16	15-7/16	32-3/4	1-1/2
20	1-11/16	1-15/16	3/8 X 3/16	½ X ¼	25-11/16	22-5/8	15-1/2	20-3/8	10-7/8	19-7/16	17	35-7/8	1-1/2
22-1/4	1-11/16	2-3/16	3/8 X 3/16	½ X ¼	28-1/2	25	17	22-9/16	11-7/8	21-5/8	18-7/8	39-9/16	1-1/2
24-1/2	1-15/16	2-3/16	½ X ¼	½ X ¼	30-3/8	27-3/8	18-1/2	24-13/16	12-7/8	23-13/16	20-3/4	43-5/16	1-1/2
27	2-3/16	2-7/16	½ X ¼	5/8 X 5/16	33-13/16	30-1/2	20-1/4	27-1/4	14-1/2	26-1/4	22-7/8	47-1/2	2
30	2-3/16	2-7/16	½ X ¼	5/8 X 5/16	37	33-11/16	22-1/4	30-1/4	15-384	29-3/16	25-5/16	52-1/2	2
33	2-3/16	2-7/16	½ X ¼	5/8 X 5/16	40-3/8	36-7/8	24-1/2	33-3/16	17-1/16	32-1/16	27-5/8	57-11/16	2
36-1/2	2-3/16	2-7/16	½ X ¼	5/8 X 5/16	40-5/8	40-9/16	27-1/2	36-11/16	18-9/16	35-7/16	30-11/16	64-3/16	2
40-1/4	NA	2-15/16	NA	¾ X 3/8	44-1/8	45	30-1/4	40-7/8	21	38-7/8	34-3/16	71-1/8	2-1/2
44-1/2	NA	3-3/16	NA	¾ X 3/8	48-7/8	49-1/2	33	45	21-7/8	43	37-3/4	78	2-1/2

Model SXB	L		N		P	Q	U	W	X	Y*	A/9 MAX MOTOR FRAME SIZE
	CL-II&IIS	CL-III	CL-II&IIS	CL-III							
12-1/4	3-3/4	na	22-5/8	na	10-11/16	6-15/16	5-15/16	24-9/16	15-16	29-9/16	256
13-1/2	3-3/4	na	23-1/8	na	11-3/4	7-5/8	6-7/16	2d6-7/8	1	30-7/8	256
15	4-3/8	na	25	na	13-1/16	8-1/2	7-5/16	30-1/16	1-1/4	32-13/16	256
16-1/2	4-3/8	na	25-15/16	na	14-3/8	9-15/16	7-15/16	32-15/16	1-1/4	34-7/16	256
18-1/4	4-3/8	na	29-3/16	na	15-7/8	10-7/16	8-11/16	36-1/4	1-9/16	37-1/16	256
20	4-1/2	4-1/2	30-9/16	31-11/16	17-3/8	11-3/8	9-7/16	39-5/8	1-11/16	38-7/8	286
22-1/4	4-1/2	4-1/2	33-9/16	34-3/8	19-3/8	12-11/16	10-7/16	43-7/8	1-7/8	41-1/4	286
24-1/2	4-1/2	4-1/2	34-9/16	35-3/8	21-5/16	14	11-3/8	48-1/8	2	43-5/8	286
27	4-1/2	4-1/2	38	38-15/16	23-1/2	15-3/8	12-3/4	53-3/8	2-1/4	46-3/4	286
30	5	4-1/2	39-15/16	40-1/4	26-1/8	17-1/8	14-1/16	59	2-9/16	49-15/16	286
33	5	5	43-1/4	44-1/16	28-3/4	18-7/8	15-3/8	64-1/2	2-13/16	53-1/8	286
36-1/2	5	5	44-3/4	45-9/16	31-3/4	18-1/4	16-7/8	71-1/4	3-1/8	56-13/16	286
40-1/4	7	7	53-1/4	53-9/16	35	19-7/8	18-3/4	79-1/8	3-1/2	61-3/16	286
44-1/2	7	7	55-1/16	55-7/8	38-11/16	25-3/8	20-5/8	87-3/16	3-7/8	65-11/16	286

In order to have our product meet the highest technological standards, we reserve the right to modify its specifications without notice.

HEAD OFFICE

8030, Metropolitan Blvd East
 Montreal (QC) H1K 1A1
 T : (514) 351-2303
 F : (514) 352-5891

ONTARIO DIVISION

6800, Kitimat Road, unit 32
 Mississauga (ON) L5N 5M1
 T : (905) 821-3674
 F : (905) 821-4857

PLANT

3025, Bernier Road
 Drummondville (QC) J2C 6Y4
 T : (819) 477-3030
 F : (819) 477-3437